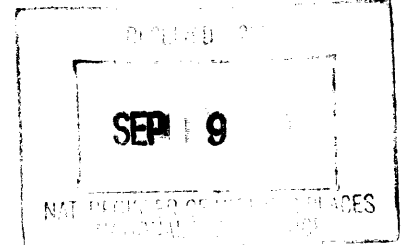


United States Department of the Interior
National Park Service

1234



National Register of Historic Places
Registration Form

This form is for use in nominating or requesting determinations for individual properties and districts. See instructions in How to Complete the National Register of Historic Places Registration Form (National Register Bulletin 16A). Complete each item by marking "x" in the appropriate box or by entering the information requested. If any item does not apply to the property being documented, enter "N/A" for "not applicable." For functions, architectural classification, materials, and areas of significance, enter only categories and subcategories from the instructions. Place additional entries and narrative items on continuation sheets (NPS Form 10-900a). Use a typewriter, word processor, or computer to complete all items.

1. Name of Property

historic name Fremont School
other names/site number Freemont School

2. Location

street & number 600 Magnolia Street not for publication
city or town Spartanburg vicinity _____
state South Carolina code SC county Spartanburg code 083 zip code 29306

3. State/Federal Agency Certification

As the designated authority under the National Historic Preservation Act of 1986, as amended, I hereby certify that this nomination request for determination of eligibility meets the documentation standards for registering properties in the National Register of Historic Places and meets the procedural and professional requirements set forth in 36 CFR Part 60. In my opinion, the property meets does not meet the National Register Criteria. I recommend that this property be considered significant nationally statewide locally. (See continuation sheet for additional comments.)

Mary W. Edmonds 9/13/00
Signature of certifying official Date

Mary W. Edmonds, Deputy State Historic Preservation Officer, S.C. Dept. of Archives and History, Columbia, S.C.
State or Federal agency and bureau

In my opinion, the property meets does not meet the National Register criteria. (See continuation sheet for additional comments.)

Signature of commenting or other official Date

State or Federal agency and bureau

4. National Park Service Certification

I, hereby certify that this property is:
 entered in the National Register Elson H. Beall 10/24/00
 See continuation sheet. Signature of the Keeper Date of Action
 determined eligible for the National Register
 See continuation sheet.
 determined not eligible for the National Register
 removed from the National Register
 other (explain): _____

Fremont School
Name of Property

Spartanburg County, South Carolina
County and State

5. Classification

Ownership of Property
(Check as many boxes as apply)

Category of Property
(Check only one box)

Number of Resources within Property
(Do not include previously listed resources)

- private
- public-local
- public-State
- public-Federal

- building(s)
- district
- site
- structure
- object

Contributing	Noncontributing	
1		buildings
		sites
		structures
		objects
1	0	Total

Name of related multiple property listing
(Enter "N/A" if property is not part of a multiple property listing.)
N/A

Number of contributing resources previously listed
in the National Register
0

6. Function or Use

Historic Functions
(Enter categories from instructions)

Category: Education

Subcategory: School

Current Functions
(Enter categories from instructions)

Category: Social

Subcategory: Civic

7. Description

Architectural Classification
(Enter categories from instructions)
Classical Revival

Materials
(Enter categories from instructions)

foundation Brick

walls Brick

roof Slate

other _____

Narrative Description
(Describe the historic and current condition of the property on one or more continuation sheets.)

Fremont School
 Name of Property

Spartanburg County, South Carolina
 County and State

8. Statement of Significance

Applicable National Register Criteria

(Mark "x" in one or more boxes for the criteria qualifying the property for National Register listing)

- A Property is associated with events that have made a significant contribution to the broad patterns of our history.
- B Property is associated with the lives of persons significant in our past.
- C Property embodies the distinctive characteristics of a type, period, or method of construction or represents the work of a master, or possesses high artistic values, or represents a significant and distinguishable entity whose components lack individual distinction.
- D Property has yielded, or is likely to yield information important in prehistory or history.

Criteria Considerations

(Mark "X" in all the boxes that apply.)

- a owned by a religious institution or used for religious purposes.
- b removed from its original location.
- c a birthplace or a grave.
- d a cemetery.
- e a reconstructed building, object, or structure.
- f a commemorative property.
- g less than 50 years of age or achieved significance within the past 50 years.

Areas of Significance

(Enter categories from instructions)

Architecture

Period of Significance

1915-1926

Significant Dates

1915

 1926

Significant Person

(Complete if Criterion B is marked above)

Cultural Affiliation

N/A

Architect/Builder

Proffitt, Luther D., Architect (1915)

 Collins, J. Frank, Architect (1926 Addition)

 Willard, Boggs, & Co., Contractor (1915)

 Fiske-Carter Construction Co., Contractor
 (1926 Addition)

Narrative Statement of Significance

Explain the significance of the property on one or more continuation sheets.)

9. Major Bibliographical References

(Cite the books, articles, and other sources used in preparing this form on one or more continuation sheets.)

Previous documentation on file (NPS):

- preliminary determination of individual listing (36 CFR 67) has been requested.
- previously listed in the National Register
- previously determined eligible by the National Register
- designated a National Historic Landmark
- recorded by Historic American Buildings Survey # _____
- recorded by Historic American Engineering Record # _____

Primary location of additional data:

- State Historic Preservation Office
 - Other State agency
 - Federal agency
 - Local government
 - University
 - Other
- Name of repository:
 S.C. Dept. of Archives & History

Fremont School
Name of Property

Spartanburg County, South Carolina
County and State

10. Geographical Data

Acreage of Property 2.02 acres

UTM References

(Place additional UTM references on a continuation sheet)

Zone Easting Northing	Zone Easting Northing
1 <u>17 413900 3868856</u>	3 <u> </u>
2 <u> </u>	4 <u> </u>

 See continuation sheet.

Verbal Boundary Description (Describe the boundaries of the property on a continuation sheet.)

Boundary Justification (Explain why the boundaries were selected on a continuation sheet.)

11. Form Prepared By

name/title Angie Shaffer (with assistance from the SHPO staff)
 organization Campbell Meek and Associates Architects, Inc. date 24 May 2000
 street & number 162 East Main Street telephone (864) 583-1456
 city or town Spartanburg state SC zip code 29306

Additional Documentation

Submit the following items with the completed form:

Continuation Sheets

Maps

- A USGS map (7.5 or 15 minute series) indicating the property's location.
- A sketch map for historic districts and properties having large acreage or numerous resources.

Photographs

Representative **black and white** photographs of the property.

Additional items

(Check with the SHPO or FPO for any additional items)

Property Owner

(Complete this item at the request of the SHPO or FPO.)

name Harry S. Parrish, Jr.
 street & number 87 Walton Street, N.W., 10th Floor telephone (404) 524-3363
 city or town Atlanta state GA zip code 30303

United States Department of the Interior
National Park Service

National Register of Historic Places
Continuation Sheet

Section number 7 Page 5

Fremont School
Name of Property
Spartanburg County, South Carolina
County and State

The Fremont School is a two-story, with partially raised basement, Classical Revival brick and terra-cotta building located at 600 Magnolia Street, intersection of Fremont Avenue and West Pearl Street, and on the northeast side of Spartanburg. Constructed in 1915 with a 118 ' by 81'10" footprint, it received a major addition built on the south end in 1926 that nearly doubled the building's size. The building housed an elementary school from 1915 to 1979.

The rectangular 211' 8" by 81' 10" building rests upon a brick foundation laid in running bond pattern with white mortar joints. Above the heavy limestone water table which surrounds the entire building are brick walls laid in Flemish bond with flashed headers and featuring baroque massing, a type often used in late nineteenth and early twentieth century Classical or Renaissance revival style schools and other public buildings. Its front (northeast) elevation faces Magnolia Street and consists of three projecting pavilions with entrance portals at the center of the two recessed segments of the facade. These entrances are exceptionally fine examples of the Classical Revival, featuring a porticoed surround and traceried doorway. They are accessed by splayed granite steps, the pedestalled side walls of which extend from the water table. Each pedimented portico, rendered in white glazed terra-cotta, is a textbook example of the Greek Doric order, with its sturdy, drum-set fluted columns and full entablature consisting of architrave, triglyph and metope-filled frieze, soffitt with mutule blocks and guttae, corona and cymatium. Each pediment consists of a split fillet, raking cornice with acroterion (pedestals), lions heads, and unadorned patera within the tympanum. Antefixes adorn the roof's edge at either side. Each doorway consists of a double-leaf wood and glass paneled door, multi-paned sidelights and classically-inspired traceried corner lights and transom.

At basement level windows are either six or nine-light wood-framed hopper types. On the first level, or piano nobile, as well as the second floor, flanking both porticoed entrances are window bands containing five nine-over-nine, double-hung sash with three-light transoms. Over each portico is a paired six-over-six, double-hung sash window with three-light transoms over each half. On each of the upper levels of central projecting pavilion is a window band of four nine-over-nine, double-hung sash with three-light transoms. All windows feature limestone sills and most still have the sash intact; however, all have been temporarily covered with plywood.. Between each of the upper floors and corresponding to each window are brick panels either alternating white glazed terra-cotta lozenges and ventilator panels on the 1915 building and only terra-cotta lozenges on the 1926 addition. Flanking each of the paired windows above the porticos are decorative white glazed terra-cotta panels. On the façade of either of the two projecting end pavilions are no windows, only a two-story high recessed brick panel with terra-cotta corner blocks, at the top of which are three square or rectangular terra-cotta panels surrounded by terra-cotta corner blocks.

Both the northwest and southeast elevations are treated similarly to that of the façade; however, each features a central projecting one-bay by one-bay stair pavilion with double-leaf entrance sheltered by a heavy cast stone hood, traceried transom and a brick and terra-cotta framed exterior

United States Department of the Interior
National Park Service

National Register of Historic Places
Continuation Sheet

Section number 7 Page 6

Fremont School
Name of Property
Spartanburg County, South Carolina
County and State

stair. Over this entrance is a brick and terra-cotta lozenge and a paired six-over-six light, double-hung sash window with transoms. A two-storied brick panel contains paired nine-over-nine light, double-hung sash windows and terra-cotta lozenge and corner blocks.

The southwest (rear) elevation contains the same arrangement of projecting pavilions and recessed segments as the façade, except that there is minimal terra-cotta ornamentation and historically an entrance was at the south side of the central projecting pavilion. Today, a one story metal lean-to addition obscures the basement and much of the first level of this elevation's treatment. Above that entrance is a terra-cotta lozenge and a paired nine-over-nine light, double hung sash window with transoms at the second level. At center on the rear elevation of the 1915 (original) segment are two single windows on either of the upper floors, with those on the second floor being quite narrow. There are two square vents located under the windows at the second floor level. The two outer-most projecting pavilions contain the same pattern featuring terra-cotta corner blocks but do not feature the design on the upper parts of these panels. The recent addition at this elevation served the building's function as a thrift store; a loading dock was also a recent addition. The windows on the first floor have been infilled with brick. A large brick chimney that serviced the boiler for the building's steam heating system rises high above the roofline immediately to the left (north) of the rear elevation's central projecting pavilion.

A gray slate roof covers the truncated hipped roof; however, when the original 1915 segment was built it boasted a tile roof. At that time a large central roof ventilator was visible as it rose near the roof ridge; it has since been removed. It is possible, based on a historic photograph of the school made by ca. 1945 for the State Sinking Fund for insurance purposes, that the tile roof had already been replaced with a slate cladding, possibly in 1926 when the addition was built. Decorative rafter tails could also be seen under the eaves of the roof in this as well as an early postcard rendering of the original building, but they were likely eliminated in the 1950 renovation. Only the beaded board-finished eave is still intact.

The interior is intact on the first and second floors. Half of the basement is finished, containing a kitchen and cafeteria, and the other half is a crawl space. The first floor contains fifteen rooms, an office, and two bathrooms. A central hallway separates classrooms on each side and features arched doorways in the cross corridor. Each room has a cloak room provided on the inside of the rooms along the corridor wall. The second floor contains a similar classroom layout and an auditorium.

United States Department of the Interior
National Park Service

National Register of Historic Places
Continuation Sheet

Section number 8 Page 7

Fremont School
Name of Property
Spartanburg County, South Carolina
County and State

The Fremont School, at 600 Magnolia Street in Spartanburg, S.C., is significant as an excellent example of Classical Revival educational architecture of the first quarter of the twentieth century, with notable exterior features including decorative brickwork of Flemish bond with flashed headers, terra cotta ornamentation, Classical Revival entrance porticoes, and notable interior features including arched doorways in the cross corridor. It is also significant as the work of two of Spartanburg's most notable architects, Luther D. Proffitt and J. Frank Collins.

The school, originally named Freemont School (the name was changed to its present spelling in 1921) was constructed soon after the South Carolina General Assembly passed legislation in 1915 requiring all children between the ages of eight and fourteen to attend school, the first compulsory attendance law in South Carolina history. Built with an address of 105 Freemont Avenue, the school was designed by Luther D. Proffitt, an architect practicing in Spartanburg ca. 1904-ca. 1936. Proffitt was the architect for several other significant projects in Spartanburg during the 1910s and 1920s, including the Spartanburg Land and Improvement Company Building (1913), Miss Gwynn's Boarding School for Girls (1914), Steedly Hospital (1916), B'Nai Israel Synagogue (1917), and Prospect Baptist Church (1922). School trustees let the contract before April 1, 1915, at a cost of \$30,186, to be built by general contractors Willard, Boggs, and Company of Spartanburg. Interestingly, the structural steel for the building was provided by Barber & Ross of Washington, DC, while Perkins Door and Sash Works out of Augusta, Georgia, produced the structure's mill work. Of particular note architecturally is the terra-cotta produced by the Atlanta Terra-Cotta Company and the bricks provided by the Kingsport Manufacturing Company out of Kingsport, Tennessee.¹ W.W. Jenkins served as Fremont School's first principal.

The 1926 addition, which essentially doubled the size of the school and changed the address to Magnolia Street, was designed by J. Frank Collins, an architect practicing in Spartanburg ca. 1911-ca. 1936; it was built by general contractors Fiske-Carter Construction Company.² Collins was the architect for several other significant projects in Spartanburg during the 1920s, including the Cummings Street School (1926), Masonic Hall (1927), Sunday School Building, First Baptist Church (1927), Office and Shop Building, Spartanburg Water Works (1927), the James F. Byrnes House (1927), the Spartanburg County Tuberculosis Sanitarium (1929), the Field House at Wofford College (1929), and significant additions and remodeling to a dormitory at Converse College (1929). Z.L. Madden was principal of Fremont School at the time of the major expansion.³

The school is currently undergoing a rehabilitation which will uncover the windows, remove the one-story additions at the rear and enhance the building's distinctive architectural character.

¹ Manufacturers' Record, 1 April 1915.

² Ibid., 10 June 1926.

³ Ella Poats, Spartanburg County School District Seven: The First Ninety-Eight Years, 1884-1982 (Columbia: R.L. Bryan Company, 1982), pp. 27, 46, 110; John E. Wells and Robert E. Dalton, The South Carolina Architects, 1885-1935: A Biographical Dictionary (Richmond, Va.: New South Architectural Press, 1992), pp. 31-33, 141-42; Sanborn Fire Insurance Company Maps, Spartanburg, S.C., 1914, 1923, 1945-1951.

United States Department of the Interior
National Park Service

National Register of Historic Places
Continuation Sheet

Section number 9 Page 8

Fremont School
Name of Property
Spartanburg County, South Carolina
County and State

REFERENCES

Manufacturers' Record, 1 April 1915 and 10 June 1926.

Poats, Ella. Spartanburg County School District Seven: The First Ninety-Eight Years, 1884-1982.
Columbia: The R.L. Bryan Company, 1982.

Sanborn Fire Insurance Company Maps, Spartanburg, S.C., 1914, 1923, 1945-1951.

Wells, John E., and Robert E. Dalton. The South Carolina Architects, 1885-1935: A Biographical Dictionary. Richmond, Va.: New South Architectural Press, 1992.

United States Department of the Interior
National Park Service

National Register of Historic Places
Continuation Sheet

Section number 10 Page 9

Fremont School
Name of Property
Spartanburg County, South Carolina
County and State

Verbal Boundary Description

The boundary of the nominated property is shown as the black line marked "Fremont School" on the accompanying "Location Map and Site Survey Map," dated 2 July 1987 and drawn at a scale of 1" = 50'.

Boundary Justification

The nominated property is restricted to the historic school and the city lot on which it is located.

United States Department of the Interior
National Park Service

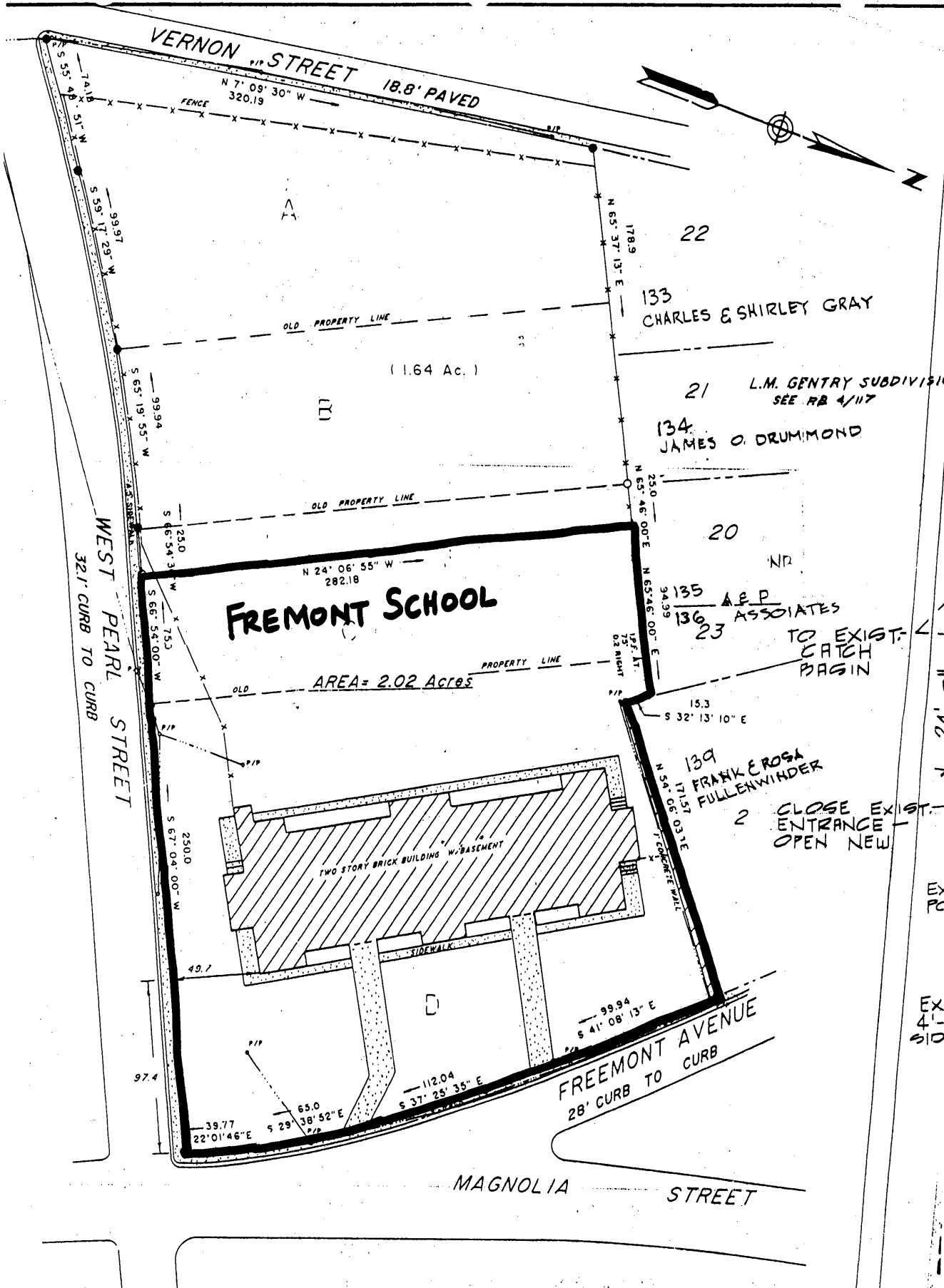
National Register of Historic Places
Continuation Sheet

Section number Photographs Page 10 Fremont School
Name of Property
Spartanburg County, South Carolina
County and State

The following information is the same for each of the photographs:

Name of Property: Fremont School
Location of Property: 600 Magnolia Street
Spartanburg, Spartanburg County, S.C.
Name of Photographer: Campbell Meek and Associates, Architects, Inc.
Date of Photographs: 19 May 2000
Location of Original Negatives: S.C. Department of Archives and History, Columbia, S.C.

1. Northeast (facade) elevation
2. Partial northeast (facade) elevation
3. Detail on north corner of northeast (facade) elevation
4. Entrance on northeast (facade) elevation
5. Detail of entrance on northeast (facade) elevation
6. Detail of entrance on northeast (facade) elevation
7. Northwest elevation
8. Northeast (facade) elevation
9. Southeast elevation
10. Southeast elevation
11. Southeast and southwest elevations
12. Southwest elevation
13. Partial southwest elevation
14. Partial southwest elevation
15. Typical interior doorway
16. Typical classroom interior
17. First floor corridor
18. Entrance corridor
19. Central stairway
20. Central corridor
21. Arched doorway at entrance corridor
22. Northern stairway
23. Northern stairway detail



LOCATION MAP & SITE SURVEY MAP

SCALE 1"=50'

SURVEY BY NEIL R. PHILLIPS, REGISTERED LAND SURVEYOR
 7 JULY 1987