

United States Department of the Interior National Park Service

National Register of Historic Places Registration Form

This form is for use in nominating or requesting determinations of eligibility for individual properties or districts. See instructions in Guidelines for Completing National Register Forms (National Register Bulletin 16). Complete each item by marking "x" in the appropriate box or by entering the requested information. If an item does not apply to the property being documented, enter "N/A" for "not applicable." For functions, styles, materials, and areas of significance, enter only the categories and subcategories listed in the instructions. For additional space use continuation sheets (Form 10-900a). Type all entries.

1. Name of Property

historic name Walhalla Graded School

other names/site number

2. Location

street & number 101 East North Broad Street

not for publication

city, town Walhalla

vicinity

state South Carolina code SC county Oconee code 073 zip code 29691

3. Classification

Ownership of Property

- private
public-local
public-State
public-Federal

Category of Property

- building(s)
district
site
structure
object

Number of Resources within Property

Table with columns: Contributing, Noncontributing, buildings, sites, structures, objects, Total. Values: 1, 0, 0, 0, 0, 1.

Name of related multiple property listing: N/A

Number of contributing resources previously listed in the National Register 0

4. State/Federal Agency Certification

As the designated authority under the National Historic Preservation Act of 1966, as amended, I hereby certify that this nomination request for determination of eligibility meets the documentation standards for registering properties in the National Register of Historic Places and meets the procedural and professional requirements set forth in 36 CFR Part 60. In my opinion, the property meets does not meet the National Register criteria. See continuation sheet.

Mary W. Edmonds

Signature of certifying official

Mary W. Edmonds, Deputy SHPO, S. C. Dept. of Archives and History

State or Federal agency and bureau

1/13/92 Date

In my opinion, the property meets does not meet the National Register criteria. See continuation sheet.

Signature of commenting or other official

Date

State or Federal agency and bureau

5. National Park Service Certification

I, hereby, certify that this property is:

- entered in the National Register.
determined eligible for the National Register.
determined not eligible for the National Register.
removed from the National Register.
other, (explain:)

Signature of the Keeper: Alan J. Foy

Entered in the National Register

2/13/92 Date of Action

Signature of the Keeper

Date of Action

6. Function or Use

Historic Functions (enter categories from instructions)

EDUCATION/school

Current Functions (enter categories from instructions)

EDUCATION/administration

7. Description

Architectural Classification

(enter categories from instructions)

Classical Revival

Materials (enter categories from instructions)

foundation Brick

walls Brick

roof Metal

other Wood

Describe present and historic physical appearance.Summary Description:

The Walhalla Graded School is on a one-half acre site located at the corner of East North Broad and College Streets in Walhalla, Oconee County, South Carolina. The irregular-shaped, thirteen-bay, two-story building is composed of four sections. The oldest portion, the 1902 graded school built in the Classical Revival style, faces south and is bounded by East North Broad Street. The eastern portion of the building was built between 1913 and 1914. The northern portion of the building is the auditorium which was also built between 1913 and 1914. Another addition which extends from the rear of the auditorium was built in the 1950s to provide additional classroom space. The entire building is constructed of brick and rests on a brick foundation, with a raised basement under the two earliest portions of the building. These two early portions of the building have a hip roof with hip knobs and are covered with stamped sheet-metal shingles. The main facade faces south and measures approximately ninety-two feet, and the west elevation measures approximately one-hundred-and-twenty-five feet.

Additional Descriptive Information:

The facade of the original 1902 graded school faces south, and is bounded by East North Broad Street. The projecting symmetrical east and west sections of the facade each have four, one-over-one, double-hung sash windows with concrete sills on the first and second floors. These sections rest on a raised brick basement with courses of projecting bricks that extend around the sides of the building, and have a two-course brick stringcourse directly above both the first and second floor windows. The raised basement features fifteen-light wood-sash hopper windows with concrete sills and gauged-brick jack arches.

The central section of the facade features a central projecting pavilion topped by a curvilinear gable. The upper portion of this projecting central pavilion appears to date to the 1902 construction date of the original section of the building. The lower portion was altered in 1984, when the brick porch and concrete handicap-access ramp was added.

 See continuation sheet

8. Statement of Significance

Certifying official has considered the significance of this property in relation to other properties:

nationally statewide locally

Applicable National Register Criteria A B C D

Criteria Considerations (Exceptions) A B C D E F G

Areas of Significance (enter categories from instructions)

Architecture
Education

Period of Significance

1901 - 1914

Significant Dates

1901-02
1913-14

Cultural Affiliation

N/A

Significant Person

N/A

Architect/Builder

Edwards & Walter, Architects
Grandy & Jordan, Contractors

State significance of property, and justify criteria, criteria considerations, and areas and periods of significance noted above.

The Walhalla Graded School, located at the corner of East North Broad and College Streets in Walhalla, South Carolina, is comprised of a 1902 graded school, a 1913-14 auditorium and east wing addition, and a 1950s classroom addition. It is significant as an excellent example of an educational building in the Classical Revival style, and the work of an important South Carolina architectural firm, Edwards and Walter, of Columbia. The school is also significant for its role in the educational development of Oconee County. An important landmark in Walhalla, this school was built on what had historically been the temporary site of Newberry College and Adger College. It is one of the few surviving, relatively intact, early-twentieth-century brick school buildings still in use today in Oconee County.

Additional Information

Walhalla Graded School was constructed on a portion of an original two-acre lot of land conveyed on January 4, 1871, by Dietrich Biemann, one of the town of Walhalla's founders, to William S. Bowman, trustee of Newberry College, in Newberry, S. C. In the event the college ceased to exist or relocated, as it did in 1877, the land was to be conveyed to the Walhalla Town Council to be used "exclusively for the promotion of the education of the white race and more especially of the white residents" of Walhalla.(1) In the aftermath of the Civil War, Newberry College experienced such economic hardships that, upon an invitation from the town of Walhalla, it moved there in 1868. When the college returned to Newberry in 1877, Adger College was organized as its successor and operated from the same building until 1884, when a grammar school was opened.(2) After this school building burned on October 22, 1888, a dancing pavilion was erected on the property, then known as Catherine Park. In 1898, the pavilion was "enclosed and made suitable for school purposes." Not until 1901-02, when the current building was constructed, was a permanent structure placed on the property.(3)

See continuation sheet

9. Major Bibliographical References

See Continuation Sheets (Section 8)

Previous documentation on file (NPS):

- preliminary determination of individual listing (36 CFR 67) has been requested
- previously listed in the National Register
- previously determined eligible by the National Register
- designated a National Historic Landmark
- recorded by Historic American Buildings Survey # _____
- recorded by Historic American Engineering Record # _____

See continuation sheet

Primary location of additional data:

- State historic preservation office
- Other State agency
- Federal agency
- Local government
- University
- Other

Specify repository:

S. C. Dept. of Archives and History,
Columbia, S. C.

10. Geographical Data

Acreage of property less than one acre

UTM References

A

1	7	3	1	1	0	0	0	3	8	4	8	9	3	0
Zone		Easting						Northing						

C

Zone		Easting						Northing						

B

Zone		Easting						Northing						

D

Zone		Easting						Northing						

See continuation sheet

Verbal Boundary Description

The boundary for the Walhalla Graded School is shown as the heavy black line on the accompanying plat of land prepared by Farmer & Simpson, Engineers, Anderson, S. C., and dated May 23, 1989; recorded by Oconee County Clerk of Court on May 30, 1989, and drawn at a scale of one inch equalling sixty feet.

See continuation sheet

Boundary Justification

The boundary for the Walhalla Graded School includes only the historic school building and its immediate surroundings.

See continuation sheet

11. Form Prepared By

name/title Edward B. Tolson and Andrew W. Chandler, SHPO Staff; w/ assistance from Bonnie Rushlow,
organization S. C. Department of Archives and History date October 4, 1991 Walhalla, S. C.
street & number 1430 Senate Street telephone (803) 734-8610
city or town Columbia state South Carolina zip code 29211

United States Department of the Interior
National Park Service

National Register of Historic Places Continuation Sheet

Section number 7 Page 2

The double entry doors, which were also added at this time, are flanked by brick pilasters with tall brick plinths. The pilasters feature recessed panels with modern metal light fixtures and are topped by metal Ionic capitals which support a full entablature. Above the entablature is a pair of one-over-one double-hung sash windows. Above the windows, in the center of the curvilinear gable, is a three-panel, raised-panel wood insert with a concrete sill with volutes at the sill corners, and a gauged-brick jack arch above. An alteration, this raised-panel wood insert either replaced or covers what appears in earlier photographs to have been a fifteen-over-one double-hung sash window. Above the wood panel is a cone-shaped flagpole support and a triangular wood sign with the school district logo.

On each side of the central projecting pavilion are one-over-one double-hung sash windows with concrete sills and gauged-brick jack arches with keystones. Outside of these windows are tall, one-over-one double-hung sash windows with concrete sills and gauged-brick jack arches with keystones. Both of these tall windows are actually two windows separated by a pair of vertical wood panels, but arranged in one tall frame to appear as one window.

The central portion of the south facade has a lateral hip roof with hip knobs. The original west wing and the 1913-14 east wing of this facade each have a cross hip roof with hip knobs. Therefore, the cross hip roofs are perpendicular to the hip roof of the central portion. These hip roofs are covered with stamped sheet-metal shingles, and feature a cornice with dentils and crown molding.

The west elevation of the school building faces College Street, and consists of three sections: The west side of the original 1902 graded school, the 1913-14 auditorium, and the 1950s classroom addition. The west side of the 1902 graded school rests on a raised basement with four, fifteen-light wood-sash hopper windows with concrete sills and gauged-brick jack arches. The first and second floors feature one-over-one double-hung sash windows in a group of four to the south and a group of five to the north, creating a balanced nine-bay elevation. This elevation also has a two-course brick stringcourse directly above both the first and second floor windows.

The 1913-14 auditorium is a one-story, six-bay brick building which extends from the north wall of the main school building. The west elevation features seven brick pilasters with concrete plinths and concrete

United States Department of the Interior
National Park Service

National Register of Historic Places Continuation Sheet

Section number 7 Page 3

copings. Each of the six bays has a two-course, rounded-arch brick lintel with a concrete keystone. The southern bay has been altered to provide a side entrance into the auditorium. This bay has a pair of entrance doors with metal posts supporting a flat, tar-and-gravel roof. The doors have three horizontal wood panels below and three glazed lights above. The two bays closest to the double doors have been boarded up, but the bay itself has not been altered. Each of the three northern bays feature pairs of six-over-six double-hung sash windows, with the rounded-arch section having been boarded up. This building has a flat roof, probably covered with tar and gravel.

The 1950s classroom addition is a one-story, one-bay brick building which extends from the north wall of the 1913-14 auditorium. At the north end of the west elevation of the 1950s classroom addition is a small concrete porch with concrete steps and metal handrails, metal posts supporting a flat, tar-and-gravel roof, and a pair of double doors providing access to the building.

The east elevation of the school building faces a gravel drive, and consists of three sections: the 1913-14 portion of the main school building, the 1913-14 auditorium, and the 1950s classroom addition. The east elevation of the 1913-14 portion of the main school building is identical to the west elevation of the 1902 graded school with the exception of one small feature: a metal coal chute (pat. Oct. 16, 1905), located in the raised basement. The east elevation of the 1913-14 auditorium is identical to the west elevation with one small exception. The rounded-arch section of the three northern windows still retain their original panes of glass. The east elevation of the 1950s addition has no doors or windows.

The north elevation of the school building, both the original 1902 graded school section and the 1913-14 east wing, has been altered to allow for the 1913-14 auditorium. The west side, which is part of the original 1902 graded school, still retains the gauged-brick jack arch over the window in the raised basement, but the sash has been removed to allow for ducts for a modern HVAC (Heating Venting And Cooling) unit. The three first-floor windows have been boarded up but the openings in the brick wall are unaltered. Two of the three second-floor windows are one-over-one double-hung sash windows identical to other windows throughout the second floor, but the third one was altered in the 1930s into a fire escape door. At this point, a metal landing and fire escape protrudes from the wall.

United States Department of the Interior
National Park ServiceNational Register of Historic Places
Continuation SheetSection number 7 Page 4

The east side of the north elevation, which is part of the 1913-14 east wing, still retains the fifteen-light wood-sash hopper window with a gauged-brick jack arch. There is a basement access door which also features a gauged-brick jack arch. Only one of the three first-floor windows has been boarded up, and one of the second-floor windows has been altered into a fire escape door.

Historic photographs indicate that the interior of the original school building was accessed by wooden stairs and a door on the east side. This door was removed when the east wing was added in 1913-14. The present primary entrance is on the East North Broad Street facade. The modern, glass and steel double doors, sidelights, and transoms open into a foyer that leads through a rounded-arch wall opening to the first-floor hallway. This hallway features the original wall finish of wood baseboards and wainscot with chair rail, and the original ceiling finish of wood strips identical to the wainscot, and crown molding. The doors to the first floor rooms have seven raised panels each, with three small vertical panels below, one long horizontal panel in the middle, and three tall vertical panels above. The door surround has plinth blocks below, and a glazed transom above with a wide board topped by crown molding. At the east and west ends of the entrance hall are curved walls with wainscot and chair rail that lead to doors with five panels arranged like the seven-panel doors throughout the rest of the first-floor. Two former classrooms on the west end of the entrance hall have been converted into a large conference room. Two former classrooms on the east end have been converted into offices. All original interior finishes have been retained, with the only alterations occurring where new walls interrupt the old surfaces.

From the foyer, the focal point of the main entrance hall is a rounded arch to the north which leads to a set of stairs that provide the primary access to the 1913-14 auditorium. The pair of wood doors here have six horizontal panels and the same plinth and transom treatment as the other first-floor doors, and the stair walls have wainscot and chair rail. Some of the stucco on the interior walls is in a state of deterioration caused by roof leaks which have now been repaired. The brick walls, wood floors, and wood wainscot and chair rail are, however, in good condition. On the north wall of the auditorium is a large stage flanked by two wood pilasters and topped by a wood Tudor-arch. Wood wainscot accentuates this flattened Tudor-arch. The coffered ceiling of the auditorium features metal panels which are in relatively good condition, although some have been removed to allow access for roof repairs. On the south wall of the auditorium, above the main entrance doors, is a balcony with a wainscot apron wall topped

**United States Department of the Interior
National Park Service**

**National Register of Historic Places
Continuation Sheet**

Section number 7 Page 5

with an iron handrail. Although portions of the rounded-arch window openings have been boarded up from the outside, from the inside it is evident that all of the original windows' members are still in place and only need careful rehabilitation to return them to operable condition.

At the east and west ends of the entrance hall in the original 1902 graded school section are staircases leading to the second floor rooms. These dogleg stairs feature finished stringers, wide wall stringers, square balusters, and newels with flared caps and decorative blocks at the handrail level. There is wainscot and chair rail on all the walls of the stairs, and the landings have wide baseboards with decorative corner blocks at the inside corners. The original second-floor wall finishes and woodwork details, identical to the first floor, were retained when the six classrooms were converted into offices.

Although the room functions have been changed and the building no longer functions as a school, it still serves the educational needs of Oconee County as the offices of the Oconee County School District. It remains an important building in the economic and educational life of Walhalla and Oconee County. Also, it is one of the few remaining, relatively intact, brick school buildings in Oconee County.

United States Department of the Interior
National Park ServiceNational Register of Historic Places
Continuation SheetSection number 8 Page 2

On February 12, 1901, the South Carolina Senate passed a child labor bill prohibiting the mill employment of children under twelve years old and encouraging their education. Although it did not become law until several years later, it no doubt heightened awareness of the need, especially in textile centers, for a compulsory school attendance law in South Carolina. Since the textile industry was the primary employer in the town of Walhalla, it was evident that Walhalla needed a graded school system and a new building to accommodate the children of the district. At the time of construction, there were an estimated 500 children of grade school age living in the Walhalla school district.(4)

The well-known Columbia architectural firm of Edwards and Walter was selected in 1901 to prepare plans for the building. William Augustus Edwards (1866-1939) and his partner, Frank C. Walter, practiced in Columbia from 1901-1908, then for at least two additional years in Atlanta. The work of this firm included many public buildings, churches, schools, and residences throughout South Carolina, Georgia, Florida and Tennessee. Previous to his association with Walter, William Augustus Edwards practiced with Charles Coker Wilson, founder of the South Carolina Chapter of the American Institute of Architects and one of the southeast's most prominent architects. Edwards was the designer of six courthouses in South Carolina (all listed in the National Register); the Winthrop Training School (Withers Building) at Winthrop College at Rock Hill, S. C. (also listed in the National Register); the old law school building (Petigru, now Currell College) at the University of South Carolina; buildings at Florida A & M College (now Florida State University) in Tallahassee, at Columbia Theological Seminary in Decatur, Georgia, and at the University of Florida in Gainesville; the U. S. Post Office and Court House in Columbus, Georgia; the First Presbyterian Church of York, S. C.; and the Masonic Temple and Candler Hotel in Decatur, Georgia.(5)

Construction on the Walhalla Graded School began in December, 1901, when the contract for the building was awarded to J. W. Queen of Grandy and Jordan, from Greenville, S. C. The total cost of \$8,000 was covered by the sale of school bonds and an appropriation by the Walhalla town council.(6) By August 20, 1902, when the bell arrived for installation in a free-standing structure (burned in 1930s) in front of the school, the building's central section and west wing neared completion. It was dedicated on September 17, 1902. Not until 1913-14, following the settlement of a deed dispute with Newberry College and the Deitrich Biemann heirs in 1911, were the east wing and auditorium constructed, to complete the architect's original design.(7)

United States Department of the Interior
National Park Service

National Register of Historic Places Continuation Sheet

Section number 8 Page 3

Although the first session in the graded school saw 172 pupils enrolled, numbers increased so dramatically that a new high school building was needed by 1923-1924, when the Walhalla High School was constructed across College Street. The 1922-1923 session saw a high school enrollment of 176 pupils. This overcrowding made it necessary for high school students to use the graded school building in the mornings, leaving the lower grades to occupy it in the afternoons.(8)

In the 1950s a brick classroom addition was made to the rear of the auditorium.

The Walhalla Graded School building functioned as a school until 1980, and has served as the administrative offices of the School District of Oconee County since June 6, 1981.

Notes

(1) Book B, pp. 417-419, Oconee County Deeds, County Records on Microfilm, South Carolina Department of Archives and History, Columbia, S. C.

(2) Wendy E. Grainger, "Walhalla Graded School: Preservation, Restoration, and Reuse," unpublished manuscript, (Clemson University, Clemson, S. C., 1990); R. T. Jaynes, History of Walhalla (a compilation of articles published in the Keowee Courier from January 5, 1950 to February 23, 1950, and republished privately, March 1, 1950, Walhalla, South Carolina), pp. 33, 35.

(3) George B. Shealy, Walhalla: A German Settlement in Upstate South Carolina, (Seneca, S. C.: published privately, 1990), p. 172.

(4) Journal of the Senate of the General Assembly of the State of South Carolina Being in Regular Session Commencing Tuesday, January 8, 1901 (Columbia, S. C.: The State Printing Company, 1901), pp. 398-400; Shealy, pp. 171-172.

(5) Henry F. Withey, A.I.A. and Elsie Rathburn Withey, Biographical Dictionary of American Architects (Deceased), (Los Angeles: Hennessey & Ingalls, Inc., 1970, reprint of 1956 edition), pp. 190-191.

(6) Shealy, p. 172.

**United States Department of the Interior
National Park Service**

**National Register of Historic Places
Continuation Sheet**

Section number 8 Page 4

(7) Ibid., pp. 172-174; Book LL, pp. 382-383, Oconee County Deeds, County Records on Microfilm, South Carolina Department of Archives and History, Columbia, S. C.

(8) Shealy, pp. 174-176.

United States Department of the Interior
National Park Service

National Register of Historic Places
Continuation Sheet

Section number _____ Page 1

PHOTOGRAPHS

The following information is the same for each of the photographs:

Name of Property: Walhalla Graded School
County and State: Oconee County, South Carolina
Name of Photographer: Clarence Towe
School District of Oconee County
Date of Photographs: August 1991
Location of Original Negatives: School District of Oconee County
Walhalla, South Carolina

- P-1. Main facade (south elevation)
- P-2. East elevation (Auditorium at left; 1950s addition to right)
- P-3. Foyer (looking toward entrance to 1913-14 Auditorium)
- P-4. Front entrance from foyer
- P-5. Foyer (looking toward front entrance and west-side flight of stairs)
- P-6. Main hallway and foyer
- P-7. Stair (west-side) in main hallway (currently being restored)
- P-8. Stair (west-side) from main entrance
- P-9. Foyer and main hallway (looking east)
- P-10. Main hallway showing curved wall
- P-11. Detail of curved wall with wainscoting in main hallway
- P-12. Main hallway from east-side flight of stairs
- P-13. Oconee County School Board Room (First floor - west wing), looking north
- P-14. Oconee County School Board Room (First floor - west wing), looking south
- P-15. Detail of east-side stair landing in main hallway
- P-16. West-side stair from upstairs
- P-17. Detail of wainscoting and balustrade on west-side stair
- P-18. Upstairs main hall (looking east toward stair)
- P-19. Interior (1913-14 Auditorium), looking north toward stage
- P-20. Interior (1913-14 Auditorium), looking west toward large arched windows (balcony at left)
- P-21. Interior (1913-14 Auditorium), looking east (balcony at right)
- P-22. Interior (1913-14 Auditorium), looking south toward balcony
- P-23. North elevation of west wing (with metal fire exit stair)
- P-24. North elevation of east wing (also with metal fire exit stair), auditorium at right
- P-25. Detail of coal chute (east elevation)
- P-26. West elevation (Auditorium at center; 1950s addition to left); photograph taken August 1990
- P-27. East elevation (oblique view from southeast) - main building at left, auditorium at center, and 1950s addition at right; photograph taken September 1990

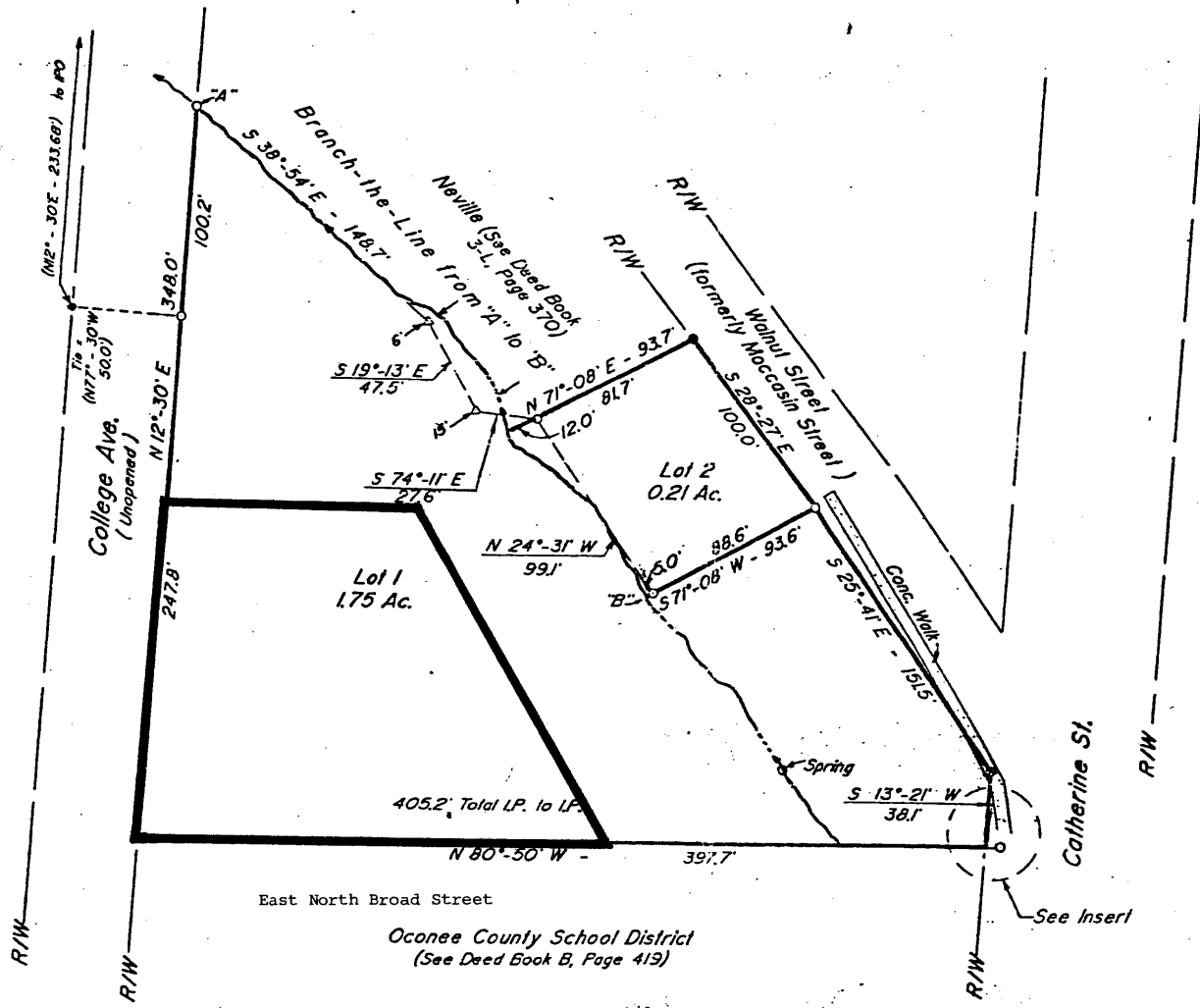
notes Iron Pin Found
notes Iron Pin Placed
notes X in Conc.
Defines The Line

FOR RECORD
OCCONEE COUNTY
S.C.
MAY 30 10 47 AM '09
SALLIE G. SMITH
CLERK OF COURT

000001

Reference: See Deed Book
482, Page 244.

30 May
A. D. 1989 in Vol. P. 56
Page 711 and Certified:
Sallie G. Smith
C.C.O.P.G.S.
Oconee County, S.C.



WALHALLA GRADED SCHOOL
Oconee County, S. C.



Iron pin set
S80°-50E 7.5'
from property corner

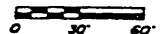
Insert
Scale: 1" = 30'

State of South Carolina
County of Oconee
Town of Walhalla

Plot of Two Lots of Land
Surveyed at the Request of
George C. Jones & L. J. Jones

Date: May 23, 1989

(Both)
Scale: 1" = 60'



Farmer & Simpson Engineers
Anderson, S.C.

I hereby certify that the ratio of
precision meets state requirements
of 1" in 10,000' and the area was
determined by the DMAD method of
area calculations.
David N. Simpson
David N. Simpson, L.S. # 1684